

Ratings

Voltage: 600 V
 Temperature: -40~105 °C
 Flammability: VW-1

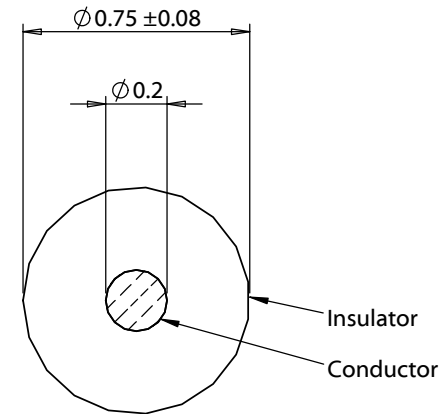
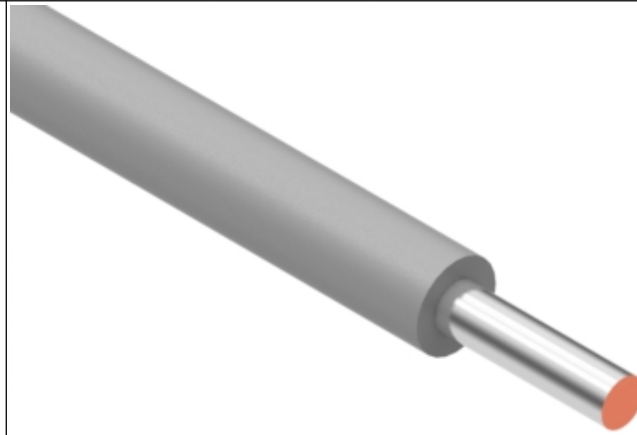
Conductor



Conductor count: 1
 Gauge: 32 AWG 0.03 mm²
 Material: tinned copper
 Strand size: \varnothing 0.2 mm (solid)
 Resistance at 20 °C: 563 Ω /km max

Insulator

Material: Polyphenylene Ether, Modified (mPPE)
 Color: gray
 Diameter: \varnothing 0.75 \pm 0.08 mm
 Nominal thickness: 0.26 mm
 Resistance at 20 °C: 100 M Ω /km min

Wire marking: E339579 UL AWM STYLE 11028 32 AWG 105°C
 600V VW-1 --- cUL AWM I A/B 105°C 600V FT1 TENSILITY



Revision:	Date:	Description:	Prepared:	Notes: RoHS compliant Phthalate and halogen free	TENSILITY tel 1.541.323.3228 800 877.670.7118 fax 1.541.323.4202 web tensility.com
A	6/3/2021	Initial release	Verified:		
			Dimensions are in millimeters. Tolerances: X: \pm 0.5 mm X.X: \pm 0.3 mm X.XX: \pm 0.05 mm	Description:	Size: Part number:
				Wire, hook-up, tinned solid core, 32 AWG, UL 11028, 600V, 105C, 0.75 mm, mPPE, gray	A 30-02140
				Scale: 40:1	 

5

4

3

2

1